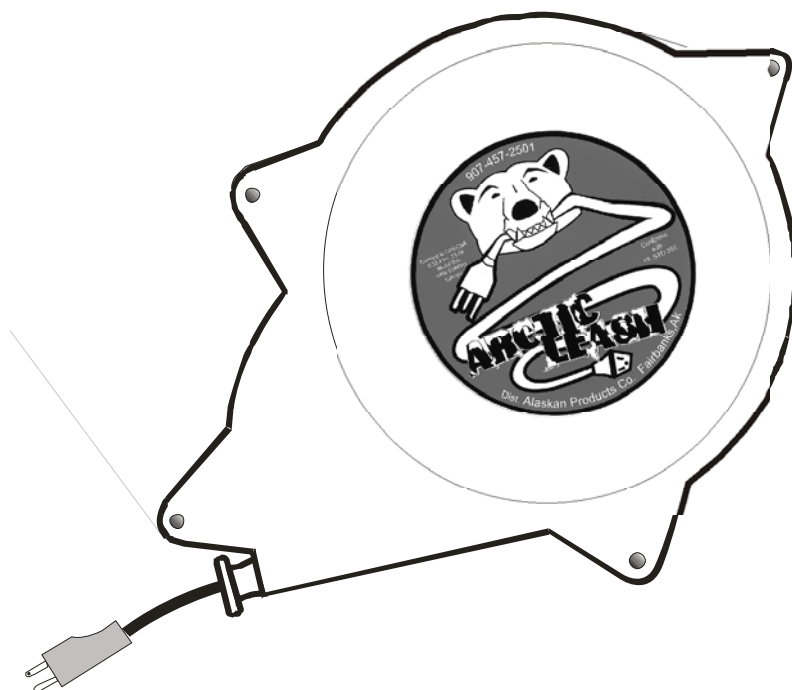


Retractable Cord Reel for Engine Block Heaters

Arctic Leash Instruction Manual



Alaskan Products Company LLC. ©

INSTALLATION INSTRUCTIONS

This instruction manual is a reference guide for installing and operating your cord reel. The bolts and brackets supplied in the installation kit may be used to fasten the cord reel securely in position. Please read the "Installation Guidelines" below before selecting a location in which to mount the cord reel.

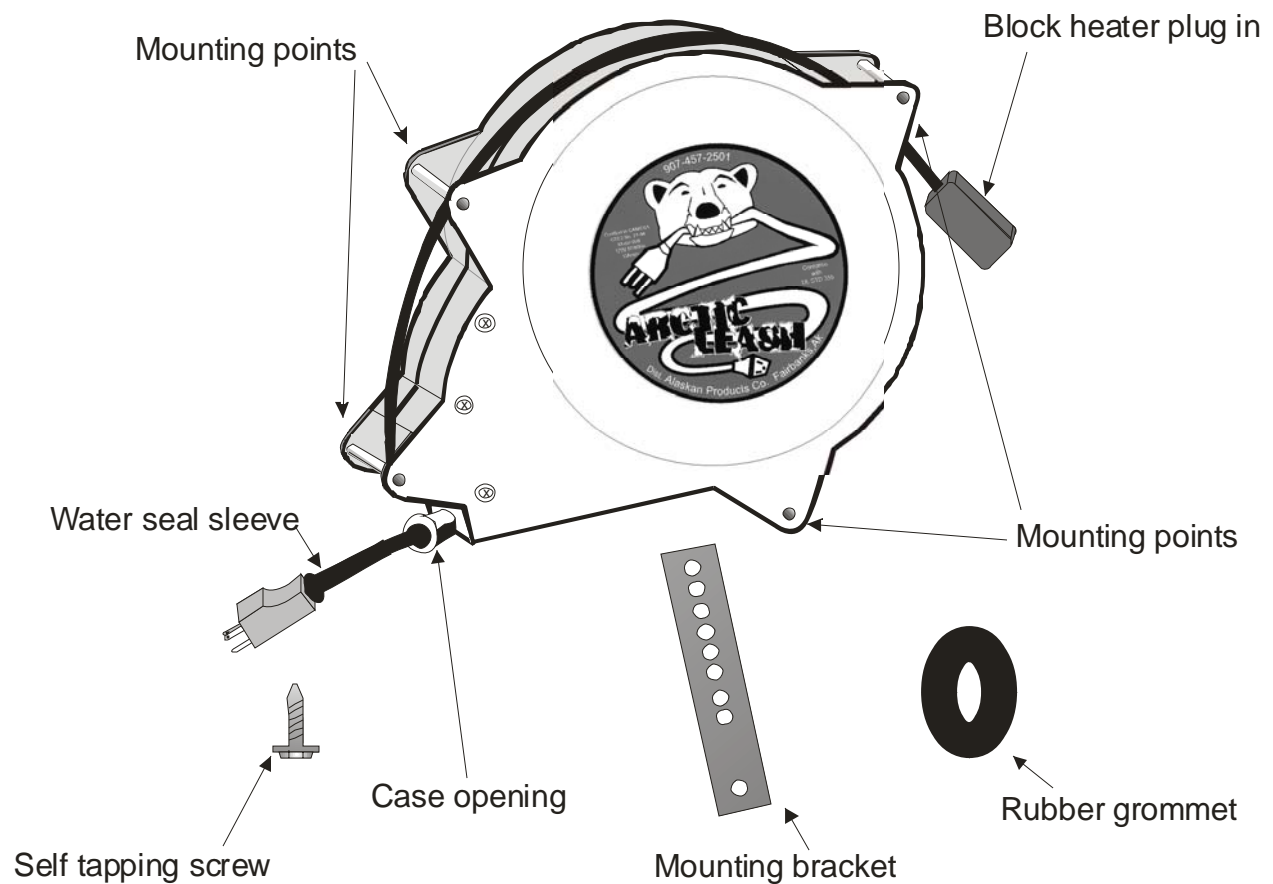
Trial fit the cord reel before drilling any holes to ensure that the following conditions are met. See page 10 for suggested mounting positions for specific vehicles.

We recommend that the cord reel be professionally installed.

INSTALLATION GUIDELINES

- Mount the reel so that the arrow molded into the case points in a downward position. This allows any moisture that comes into contact with the reel or cord to drain out. Horizontal mounting is acceptable but is less preferable.
- Select a flat surface to mount the cord reel on. If the mounting lugs are distorted leaks may develop, thus voiding the warranty. Do not distort the case by tightening the bolts tighter than 10 inch lbs. pressure.
- Securely mount the reel so that the unit itself does not move when the cord is reeled out or retracted.
- The cord reel cord should not rub nor touch sharp edges during any part of its operation. Mount the reel so the breaker (under the small orange cap) is accessible.
- Mount the cord reel so that the cord will be pulled straight out of the case.
- Locate the cord reel well clear of hot (140 F) surfaces. Engine and accessory heat can destroy the cord reel and void the warranty.

CORD REEL PARTS DIAGRAM



Mounting Points

There are 4 mounting points on the cord reel however, depending on the location where the reel is installed. It may be adequate to secure the reel using only 2 of these points.

Mounting Brackets

The supplied mounting brackets may be used to secure the cord reel to the bumper or frame of the vehicle.

Self-Tapping Screws

The supplied self-tapping screws may be used to secure the mounting brackets to the bumper or frame of vehicle.

Rubber Grommet

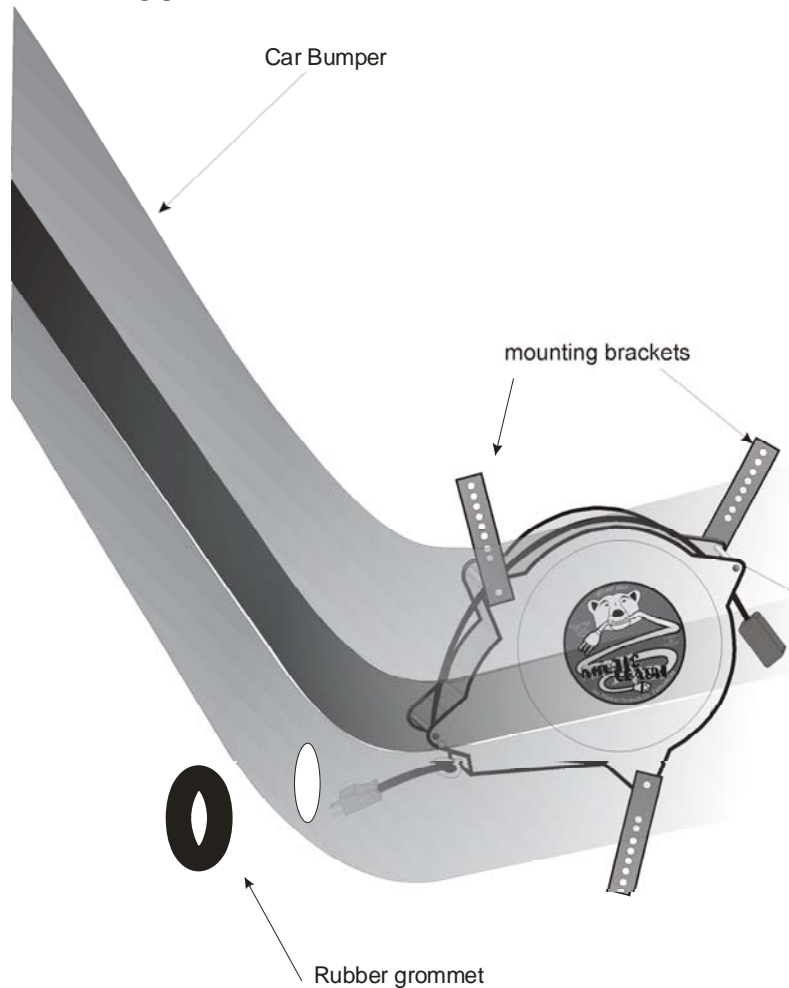
The supplied rubber grommet should be used when the installation requires a hole to be drilled for the cord to retract through.

Block Heater Plug In

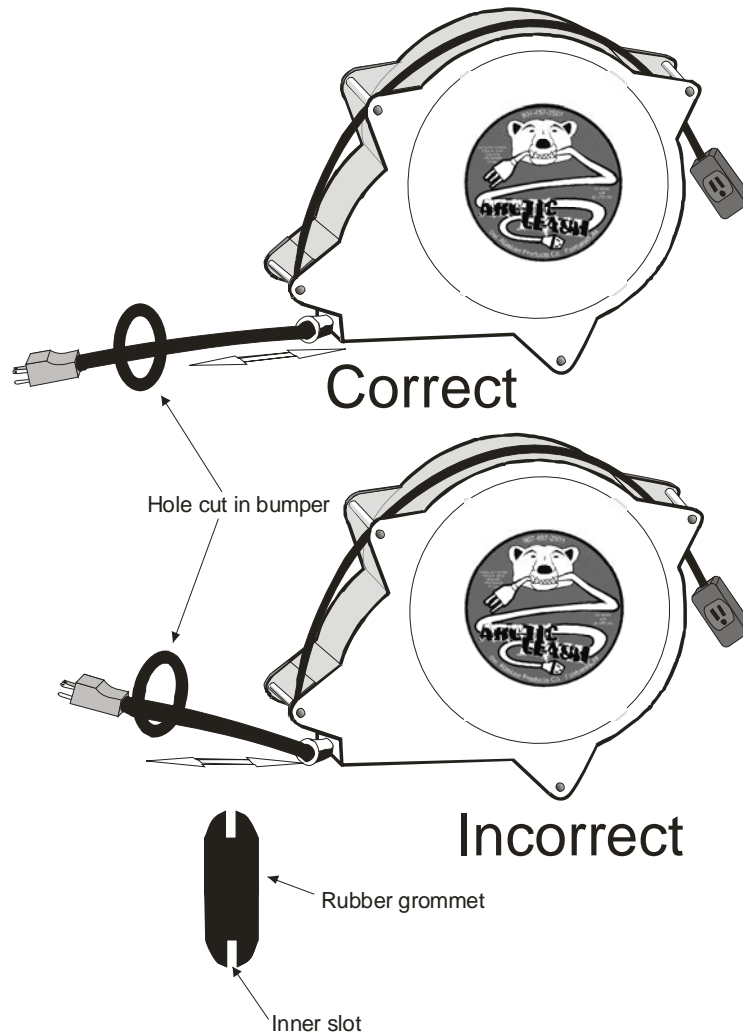
Plug this end of the reel into the block heater. If desired, you may wish to secure this end either with a nylon tie or by looping the cord for a clean installation.

The following diagrams illustrate some of the suggested mounting positions.

1. FENDER-WELL MOUNTED REEL

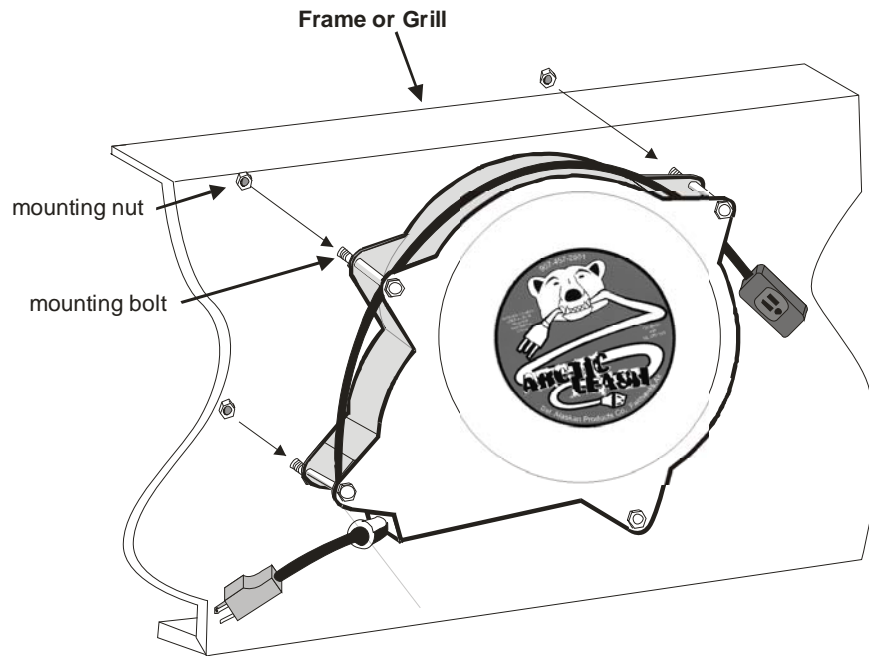


1. Select a suitable mounting location following the guidelines on page 1. Make sure the location where the cord reel is to be mounted will allow access for the hole to be drilled into the bumper for the cord to retract through.
2. Attach mounting brackets to the most suitable mounting points on the cord reel. Bend brackets accordingly to match the location the brackets will be secured to on the vehicle. *(it may be necessary to cut a portion off the top of the mounting bracket to obtain a proper fit.)*
3. Mark the location the self-tapping screws will be secured to the vehicle. Secure the mounting brackets to the vehicle.
4. Drill a hole through the vehicles bumper using a 1 1/8 hole saw *(carbide tip recommended)*. To insure optimal performance of the cord's retraction the hole should be drilled dead center to the case opening. *(See diagram on page 4)*



5. When drilling through the bumper with the hole saw drill at a low speed until the hole saw has begun to cut into the bumper. Be cautious to not allow the hole saw to come in contact with the cord reel when drilling through the bumper. *(It will be necessary to tuck the cord out of the way prior to drilling)*
6. Once the hole has been drilled pull the cord through the hole then slide the rubber grommet onto the cord and insert it into the hole in the bumper. The slot in the rubber grommet should fit snugly in the hole in the bumper. Make sure that both inside and the outside of the rubber grommet are completely flush to the bumper surface. We recommend that an automotive adhesive be applied to the inner slot of the rubber grommet to keep it securely in place.
7. Plug the block heater cord into the female plug on the vehicle's block heater. If desired, you may wish to secure this end either with a nylon tie or by looping the cord.

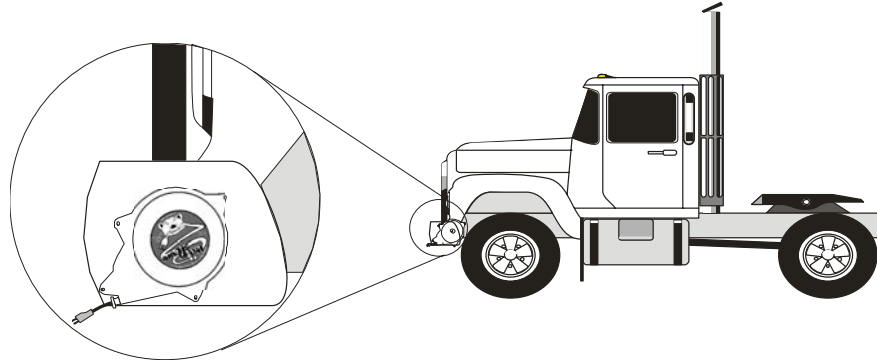
2. FRAME OR GRILL-MOUNTED REEL



1. Select a suitable mounting location following the guidelines on page 1.
2. Position the cord reel on the frame or the grill and mark the location of the 4 mounting bolts.
3. Drill 9mm (3/8 inch) holes at these marked points.
4. Remove the nuts from the mounting bolts.
5. Fit the reel into place and securely reattach the nuts.
6. Plug the block heater cord into the female plug on the vehicle. If desired, you may wish to secure this end either with a nylon tie or by looping the cord.

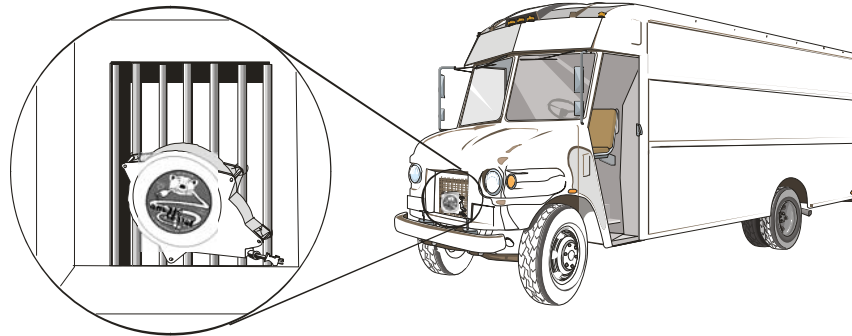
3. TRACTOR UNITS - FRONT BUMPER MOUNT

The cord reel is attached with the mounting brackets to the truck bumper. Position the reel so that the plug can be easily reached from either the underside or top of the bumper and the breaker reset is accessible from under the vehicle.

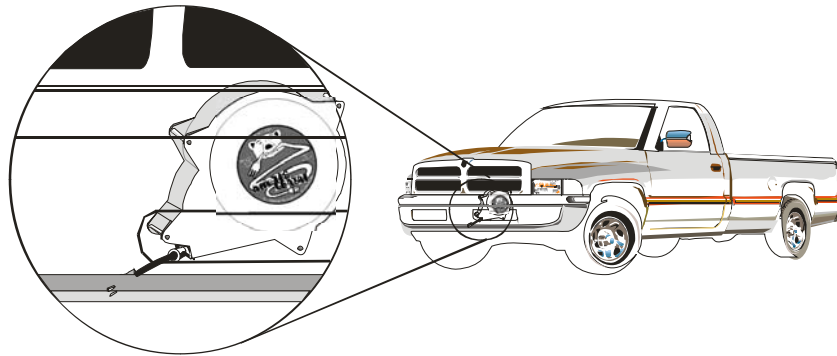


4. MEDIUM DUTY TRUCKS - GRILL OR BUMPER MOUNT

The cord reel may be securely fastened with the mounting brackets to the outside or inside surface of the front grill



5. LIGHT DUTY TRUCKS AND VANS - BODYWORK MOUNT



The cord reel is mounted either behind or below the bumper or grill to a suitable surface such as the side of the radiator support assembly using the mounting brackets. The cord reel can be mounted at a 90-degree angle as long as the retraction of the cord is at a 45-degree angle or less. This can be achieved through an existing slot shaped hole or by drilling a hole through the bumper at 8 to 10 inches in front of the case opening. The plug should be positioned so that it can be easily reached through the front grill.

In addition, the Arctic Leash cord reel has many other industrial uses to include

- Trucks and Trailers
- Bucket Trucks
- Fork Lifts
- Merchant Marine
- Farm Equipment
- Electric Appliances
- Mining Equipment
- Recreational Vehicles
- Boats
- Building Exteriors
(with reverse plug unit)

OPERATION OF THE CORD REEL

Pull the cord out of the reel. Allow the cord to gently retract into the reel housing until the cord seats into place. Allow slack in the cord so it is well CLEAR OF THE GROUND, so snow, dirt, debris etc. will not be drawn back into the cord reel when the cord is retracted.

To retract, pull cord out 3 or 4 inches and GUIDE the CORD slowly back into the reel. Keep the cord and the male plug clear of the ground as the cord retracts. This prevents the cord from gathering moisture or debris and drawing them into the internal mechanism of the unit.

AVOID DROPPING the CORD after unplugging it and letting it retract. This action puts strain on the cord and the electrical plug and could scratch the paint on your vehicle.

ALWAYS RETRACT THE CORD BEFORE MOVING THE VEHICLE.

MAINTENANCE OF THE CORD REEL

It's simple to keep your Arctic Leash Cord Reel clean and smooth operating.

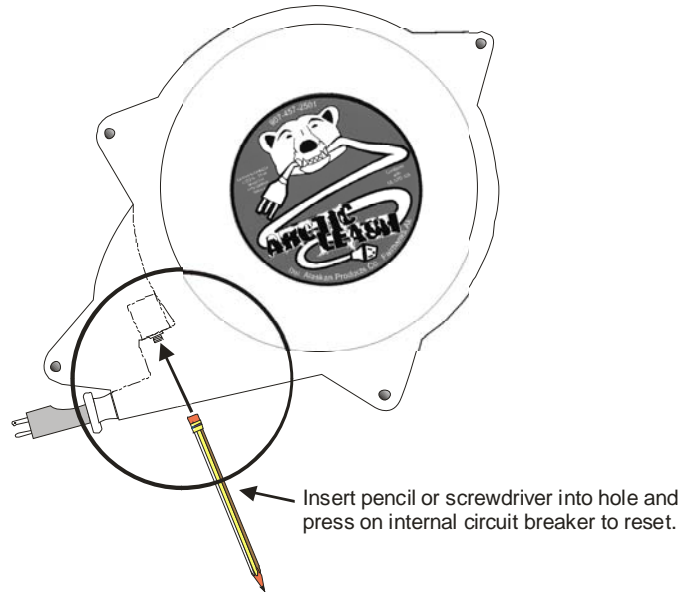
1. Remove dirt and grime as soon as it accumulates on the reel case. Just wipe the case clean with a dampened cloth.
2. Keep the cord clean to assure smoothest automatic retraction. Simply pull cord to its full length and allow to retract through a dampened cloth. For smooth operation, pull out full length again and allow to retract through a clean cloth liberally sprinkled with talcum powder.

TROUBLE SHOOTING OF THE CORD REEL

1. (*Problem*) Power is not being supplied through cord reel.
(Answer) Reset breaker.
(Answer) Defective cord reel call for replacement
2. (*Problem*) Cord reel continues to trip breaker.
(Answer) Overload on breaker due to excessive power draw (i.e. Seat heaters and interior heaters) along with normal winterization devices.
(Answer) Short in one of the winterization devices.
(Answer) Defective cord reel call for replacement
3. (*Problem*) Retractable cord freezes in place.
(Answer) If cord reel was installed with the nose pointed upward make sure water cannot run down the cord and enter the case.
(Answer) Plug cord reel in with the cord fully retracted for a 12 hour period. Then pull cord out and wipe dry with cloth.
4. (*Problem*) Cord won't retract properly.
(Answer) Adjust cord reel so the case opening is aligned correctly to the hole with the grommet.

RESETTING THE CIRCUIT BREAKER

The Arctic Leash cord reel is equipped with an internal mini circuit breaker safety device. This mini breaker will trip if the recommended amperage is exceeded. If an overload should trip the mini-breaker, check the amperage usage. The total amperage should not exceed that of the amount indicated on your cord reel. Remove the overload.



To RESET the mini-breaker REMOVE the SMALL ORANGE CAP on the bottom of the CORD REEL CASE and PUSH UP on the INSIDE RESET BUTTON with a pencil or a pen (see above diagram). If the unit still does not operate check the fuse or the circuit breaker at the power source.

Replace the orange cap after resetting.

CONTACT ALASKAN PRODUCTS COMPANY

We can be reached by phone at (907) 457-2501 or by E-Mail at APC@arcticleash.com.